

TECHNICAL MANUAL

**ORGANIZATIONAL, DIRECT SUPPORT AND
GENERAL SUPPORT MAINTENANCE
REPAIR PARTS AND SPECIAL TOOLS LIST
(INCLUDING DEPOT MAINTENANCE REPAIR PARTS
AND SPECIAL TOOLS)**

FOR

**COMPRESSOR UNIT, RECIPROCATING,
15 CFM, 175 PSI,
ELECTRIC MOTOR DRIVEN
MODEL R122RAAB, PART NO. 84950
(NSN 4310-01-139-4815)**



HEADQUARTERS, DEPARTMENT OF THE ARMY

21 FEBRUARY 1985

CHANGE

NO. 1

HEADQUARTERS
DEPARTMENT OF THE ARMY
WASHINGTON, D. C., 18 MAY 1992

**Organizational, Direct Support and General Support
Maintenance Repair Parts and Special Tools List
(Including Depot Maintenance Repair Parts
and Special Tools List)
for**

**COMPRESSOR UNIT, RECIPROCATING,
15 CFM, 175 PSI,
ELECTRIC MOTOR DRIVEN
MODEL R122RAAB, PART NO. 84950
(NSN 4310-01-139-4815)**

Approved for public release; Distribution is unlimited

TM 5-4310-375-24P, 21 February 1985 is changed as follows:

1. Remove and insert pages as indicated below. New or changed text material is indicated by a vertical bar in the margin. An illustration change is indicated by a miniature pointing hand.

Remove pages

Insert pages

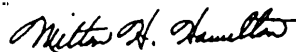
I-1 through I-4

I-1 through I-4

2. Retain this sheet in front of manual for reference purposes.

By Order of the Secretary of the Army:

Official:



MILTON H. HAMILTON
*Administrative Assistant to the
Secretary of the Army*

01390

GORDON R. SULLIVAN
*General, United States Army
Chief of Staff*

DISTRIBUTION:

To be distributed in accordance with DA Form 12-25E, (qty rqr block no. 0338).

TECHNICAL MANUAL

TM 5-4310-375-24P

HEADQUARTERS
DEPARTMENT OF THE ARMY
WASHINGTON, D.C. 21 February 1985

**ORGANIZATIONAL, DIRECT SUPPORT AND
GENERAL SUPPORT MAINTENANCE
REPAIR PARTS AND SPECIAL TOOLS LIST
(INCLUDING DEPOT MAINTENANCE REPAIR PARTS AND SPECIAL TOOLS)
FOR
COMPRESSOR UNIT, RECIPROCATING, 15 CFM, 175 PSI,
ELECTRIC MOTOR DRIVEN
MODEL R122RAAB, PART NO. 84950
(NSN 4310-01-139-4815)**

Current as of 5 October 1984

REPORTING OF ERRORS AND RECOMMENDING IMPROVEMENTS

You can help improve this manual. If you find any mistakes or if you know of a way to improve the procedures, please let us know. Mail your letter, DA Form 2028 (Recommended Changes to Publications and Blank Forms) or DA Form 2028-2 located in the back of this manual direct to: Commander, U.S. Army Troop Support Command, ATTN: AMSTR-MPS, 4300 Goodfellow Blvd., St. Louis, MO 63120-1798. A reply will be furnished to you.

TABLE OF CONTENTS

	Listing Page	Illus Figure
Section I. Introduction	1	
II. Repair parts list	1-1	
Group 01 Compressor drive		
Belt guard, drive belts and pulley	1-1	1
02 Electric motor and controls		
Starter assembly, motor controller.	2-1	2
Electric motor assembly	3-1	3
Pressure switch assembly	4-1	4
03 Compressor assembly		
Air compressor assembly	5-1	5
Inlet air filter assembly	6-1	6
Cylinder head, first and second stage valves	7-1	7
Intercooler and aftercooler	8-1	8
Cylinder, pistons, and connecting rods	9-1	9
Flywheel, crankshaft, bearings, seal and frame	10-1	10
04 Air receiver system		
Air receiver tank, gauge, and valves	11-1	11
05 Air discharge system		
Discharge hose, inflator gauge, and valve	12-1	12
III. Special tools list (Not Applicable)		
IV. National Stock Number, Part Number Index	I-1	

ORGANIZATIONAL, MAINTENANCE REPAIR PARTS AND SPECIAL TOOLS LIST

SECTION I. INTRODUCTION

1. Scope.

This RPSTL lists and authorizes spares and repair parts; special tools; special Test, Measurement, and Diagnostic Equipment (TMDE); and other special support equipment required for performance of Organizational, Direct Support, and General Support Maintenance of the Air Compressor Unit. It authorizes the requisitioning, issue, and disposition of spares, repair parts and special tools as indicated by the Source, Maintenance and Recoverability (SMR) codes.

2. General.

In addition to this section, Introduction, this Repair Parts and Special Tools List is divided into the following sections:

a. Section II. Repair Parts List. A list of spares and repair parts authorized by this RPSTL for use in the performance of maintenance. The list also includes parts which must be removed for replacement of the authorized parts. Parts lists are composed of functional groups in ascending alphanumeric sequence, with the parts in each group listed in ascending figure and item number sequence. Bulk materials are listed in item name sequences. Repair parts kits are listed separately in their own functional group within Section II. Repair parts for repairable special tools are also listed in this section. Items listed are shown on the associated illustration(s) /figure(s).

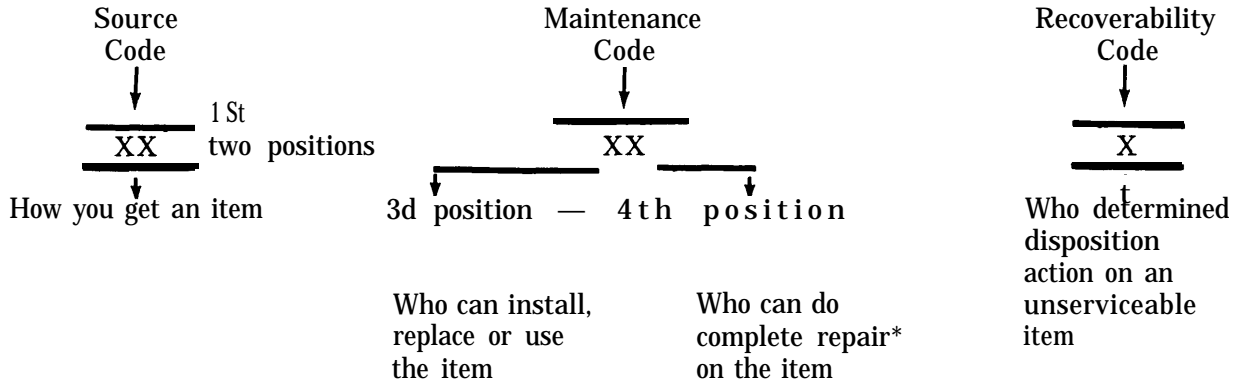
b. Section III. Special Tools List. A list of special tools, special TMDE, and other special support equipment authorized by this RPSTL (as indicated by Basis of Issue (BOI) information in DESCRIPTION AND USABLE ON CODE column) for the performance of maintenance.

c. Section IV. National stock Number and part Number Index. A list, in National Item Identification Number (NIIN) sequence, of all National stock numbered items appearing in the listings, followed by a list of alphanumeric sequence of all part numbers appearing in the listings. National stock numbers and part numbers are cross-referenced to each illustration figure and item number appearance.

3. Explanation of Columns. (Sections II and III).

a. ITEM NO. (Column (1)). Indicates the number used to identify items called out in the illustration.

b. SMR Code (Column (2)). The Source, Maintenance, and Recoverability (SMR) code is a 5-position code containing supply/requisitioning information, maintenance category authorization criteria, and disposition instructions, as shown in the following breakout:



*Complete Repair: Maintenance capacity, capability, and authority to perform all the corrective maintenance tasks of the "Repair" function in a use/user environment in order to restore serviceability to a failed item.

(1) Source Code. The source code tells you how you get an item needed for maintenance, repair, or overhaul of an end item/equipment. Explanations of source codes follow:

Code	Explanation
PB PC** PD PE PF PG	Stocked items; use the applicable NSN to request/requisition items with these source codes. They are authorized to the category indicated by the code entered in the 3d position of the SMR code.

**NOTE Items coded PC are subject to deterioration.

KD KF KB	Items with these codes are not to be requested/requisitioned individually. They are part of a kit which is authorized to the maintenance category indicated in the 3d position of the SMR code. The complete kit must be requisitioned and applied.
----------------	---

Code	Explanation
MO - (Made at Org AVUM Level) MF - (Made at DS Level) MH - (Made at GS Level) ML - (Made at Specialized Repair Act (SRA)) MD - (Made at Depot)	Items with these codes are not to be requested/requisitioned individually. They must be made from bulk material which is identified by the part number in the DESCRIPTION and USABLE ON CODE (UOC) column and listed in the Bulk Material group in the repair parts list in this RPSTL. If the item is authorized to you by the 3d position code of the SMR code, but the source code indicates it is made at a higher level, order the item from the higher level of maintenance.

Code

Explanation

AO – (Assembled by org/AVUM level)
AF – (Assembled by DS AVIM Level)
AH – (Assembled by GS Category)
AL – (Assembled by SRA)
AD – (Assembled by Depot)

Items with these codes are not to be requested/requisitioned individually. The parts that make up the assembled item must be requisitioned or fabricated and assembled at the category of maintenance indicated by the source code. If the 3d position code of the SMR code authorizes you to replace the item, but the source code indicates the items are assembled at a higher level, order the item from the higher level of maintenance.

- XA –Do not requisition an “XA”-coded item. Order its next higher assembly. (Also, refer to the NOTE below.)
- XB –If an “XB” item is not available from salvage, order it using the FSCM and part number given.
- XC –Installation drawing, diagram, instruction sheet, field service drawing, that is identified by manufacturer’s part number.
- XD –Item is not stocked. Order an “XD” ‘-coded item through normal supply channels using the FSCM and part number given, if no NSN is available.

NOTE

Cannibalization or controlled exchange, when authorized, maybe used as a source of supply for items with the above source codes, except for those source coded “XA” or those aircraft support items restricted by requirements of AR 700-42.

(2) Maintenance Code. Maintenance codes tell you the level(s) of maintenance authorized to USE and REPAIR support items. The maintenance codes are entered in the third and fourth positions of the SMR Code as follows:

(a) The maintenance code entered in the third position tells you the lowest maintenance level authorized to remove, replace, and use an item. The maintenance code entered in the third position will indicate authorization to one of the following categories of maintenance.

Code	Application/Explanation
C	–Crew or operator maintenance done within organizational or aviation unit maintenance.
O	–Organizational or aviation unit category can remove, replace, and use the item.
F	–Direct support or aviation intermediate level can remove, replace, and use the item.
H	–General support level can remove, replace, and use the item.

TM 5-4310-375-24P

Code	Application/Explanation
L	-Specialized repair activity can remove, replace, and use the item.
D	-Depot category can remove, replace, and use the item.

(b) The maintenance code entered in the fourth position tells you whether or not the item is to be repaired and identifies the lowest maintenance level with the capability to do complete repair (i.e., perform all authorized repair functions). (NOTE: Some limited repair may be done on the item at a lower level of maintenance, if authorized by the Maintenance Allocation Chart (MAC) and SMR codes.) This position will contain one of the following maintenance codes.

Code	Application/Explanation
0	-Organizational or aviation unit is the lowest level that can do complete repair of the item.
F	-Direct support or aviation intermediate is the lowest level that can do complete repair of the item.
H	-General support is the lowest level that can do complete repair of the item.
L	-Specialized repair activity (designate the specialized repair activity) is the lowest level that can do complete repair of the item.
D	-Depot is the lowest level that can do complete repair of the item.
Z	-Nonreparable. No repair is authorized.
B	-No repair is authorized. (No parts or special tools are authorized for the maintenance of a "B"coded item.) However, the item may be reconditioned by adjusting, lubricating, etc., at the user level.

(3) Recoverability Code. Recoverability codes are assigned to items to indicate the disposition action on unserviceable items. The recoverability code is entered in the fifth position of the SMR Code as follows:

Recoverability Codes	Application/Explanation
z	-Nonreparable item. When unserviceable, condemn and dispose of the item at the level of maintenance shown in 3d position of SMR code.
0	-Reparable item. When uneconomically reparable, condemn and dispose of the item at organizational or aviation unit level.

Recoverability Code	Application/Explanation
F	-Reparable item. When uneconomically reparable, condemn and dispose of the item at the direct support or aviation intermediate level.
H	-Reparable item. When uneconomically reparable, condemn and dispose of the item at the general support level.
D	-Reparable item. When beyond lower level repair capability, return to depot. Condemnation and disposal of item not authorized below depot level.
L	-Reparable item. Condemnation and disposal not authorized below specialized repair activity (SRA).
A	-Item requires special handling or condemnation procedures because of specific reasons (i.e., precious metal content, high dollar value, critical material, or hazardous material). Refer to appropriate manuals/directives for specific instructions.

c. FSCM (Column 3). The Federal Supply Code for Manufacturer (FSCM) is a 5-digit numeric code which is used to identify the manufacturer, distributor, or Government agency, etc., that supplies the item.

d. PART NUMBER (Column 4). Indicates the primary number used by the manufacturer (individual, company, firm, corporation, or Government activity), which controls the design and characteristics of the item by means of its engineering drawings, specifications, standards, and inspection requirements to identify an item or range of items.

NOTE

When you use an NSN to requisition an item, the item you receive may have a different part number from the part ordered.

e. DESCRIPTION AND USABLE ON CODE (UOC) (Column 5). This column includes the following information:

- (1) The Federal item name and, when required, a minimum description to identify the item.
- (2) The physical security classification of the item is indicated by the parenthetical entry (e.g., Phy Sec Cl (C) - Confidential, Phy Sec Cl (S) -Secret, Phy Sec Cl (T) - Top Secret).
- (3) Items that are included in kits and sets are listed below the name of the kit or set.
- (4) Spare/repair parts that make up an assembled item are listed immediately following the assembled item line entry.

(5) Part numbers for bulk materials are referenced in this column in the line item entry for the item to be manufactured/fabricated.

(6) When the item is not used with all serial numbers of the same model, the effective serial numbers are shown on the last line(s) of the description (before UOC).

(7) The usable on code, when applicable (see paragraph 5, Special Information).

(8) In the Special Tools List section, the basis of issue (BOI) appears as the last line(s) in the entry for each special tool, special TMDE, and other special support equipment. When density of equipments supported exceed density spread indicated in the basis of issue, the total authorization is increased proportionately.

(9) The statement "END OF FIGURE" appears just below the last item description in Column 5 for a given figure in both Section II and Section III.

f. QTY (Column 6). The QTY (quantity per figure column) indicates the quantity of the item used in the breakout shown on the illustration figure, which is prepared for a functional group, subfunctional group, or an assembly. A "V" appearing in this column in lieu of a quantity indicates that the quantity is variable and the quantity may vary from application to application.

4. Explanation of Columns (Section IV).

a. NATIONAL STOCK NUMBER (NSN) INDEX.

(1) **STOCK NUMBER column.** This column lists the NSN by National item identification number (NIIN) sequence. The NIIN consists of the last nine digits of the NSN i.e. NIIN (5305-01-574-1467). When using this column to locate an item, ignore the first 4 digits of the NSN. However, the complete NSN should be used when ordering items by stock number.

(2) **FIG. column.** This column lists the number of the figure where the item is identified/located. The figures are in numerical order in Section II and Section III.

(3) **ITEM column.** The item number identified the item associated with the figure listed in the adjacent FIG. column. This item is also identified by the NSN listed on the same line.

b. PART NUMBER INDEX. Part numbers in this index are listed by part number in ascending alphanumeric sequence (i.e., vertical arrangement of letter and number combination which places the first letter or digit of each group in order A through Z, followed by the numbers O through 9 and each following letter or digit in like order).

(1) **FSCM column.** The Federal Supply Code for Manufacturer (FSCM) is a 5-digit numeric code used to identify the manufacturer, distributor, or Government agency, etc., that supplies the item.

(2) **PART NUMBER column.** Indicates the primary number used by the manufacturer (individual, firm, corporation, or Government activity), which controls the design and characteristics of the item by means of its engineering drawings, specifications standards, and inspection requirements to identify an item or range of items.

(3) **STOCK NUMBER column.** This column lists the NSN for the associated part number and manufacturer identified in the PART NUMBER and FSCM columns to the left.

(4) FIG. column. This column lists the number of the figure where the item is identified/located in Sections II and 111.

(5) ITEM column. The item number is that number assigned to the item as it appears in the figure referenced in adjacent figure number column.

5. Special Information. Use the following subparagraphs as applicable:

a. Usable On Code. The usable on code appears in the lower left corner of the Description column heading. Usable on codes are shown as UOC:“ in the Description Column (justified left) on the first line applicable item description/nomenclature. Uncoded items are applicable to all models.

b. Associated Publications. The publication listed below pertains to the Air Compressor Unit and its components.

Publication	Short Title
TM 5-4310-374-14	Compressor Unit, 15 CFM, 175 PSI

6. How To Locate Repair Parts.

a. When National Stock Number or Part Number is NOT Known:

(1) First. Using the table of contents, determine the assembly group or subassembly group to which the item belongs. This is necessary since figures are prepared for functional groups and subassembly groups, and listings, are divided into the same groups.

(2) Second. Find the figure covering the assembly group or subassembly group to which the item belongs.

(3) Third. Identify the item on the figure and note the item number.

(4) Fourth. Refer to the Repair Parts List for the figure to find the part number for the item number noted on the figure.

(5) Fifth. Refer to the Part Number Index to find the NSN, if assigned.

b. When National Stock Number or Part Number is Known:

(1) First. Using the Index of National Stock Numbers and Parts Numbers, find the pertinent National Stock Number or Part Number. The NSN index is in National Item Identification Number (NIIN) sequence (see 4a (1)). The part numbers in the Part Number index are listed in ascending alphanumeric sequence (see paragraph 4b). Both indexes cross-reference you to the illustration figure and item number of the item you are looking for.

(2) Second. After finding the figure and item number, verify that the item is the one you are looking for, then locate the item number in the repair parts list for the figure.

7. Abbreviations. Abbreviations used in this manual are listed in MIL-STD-12.

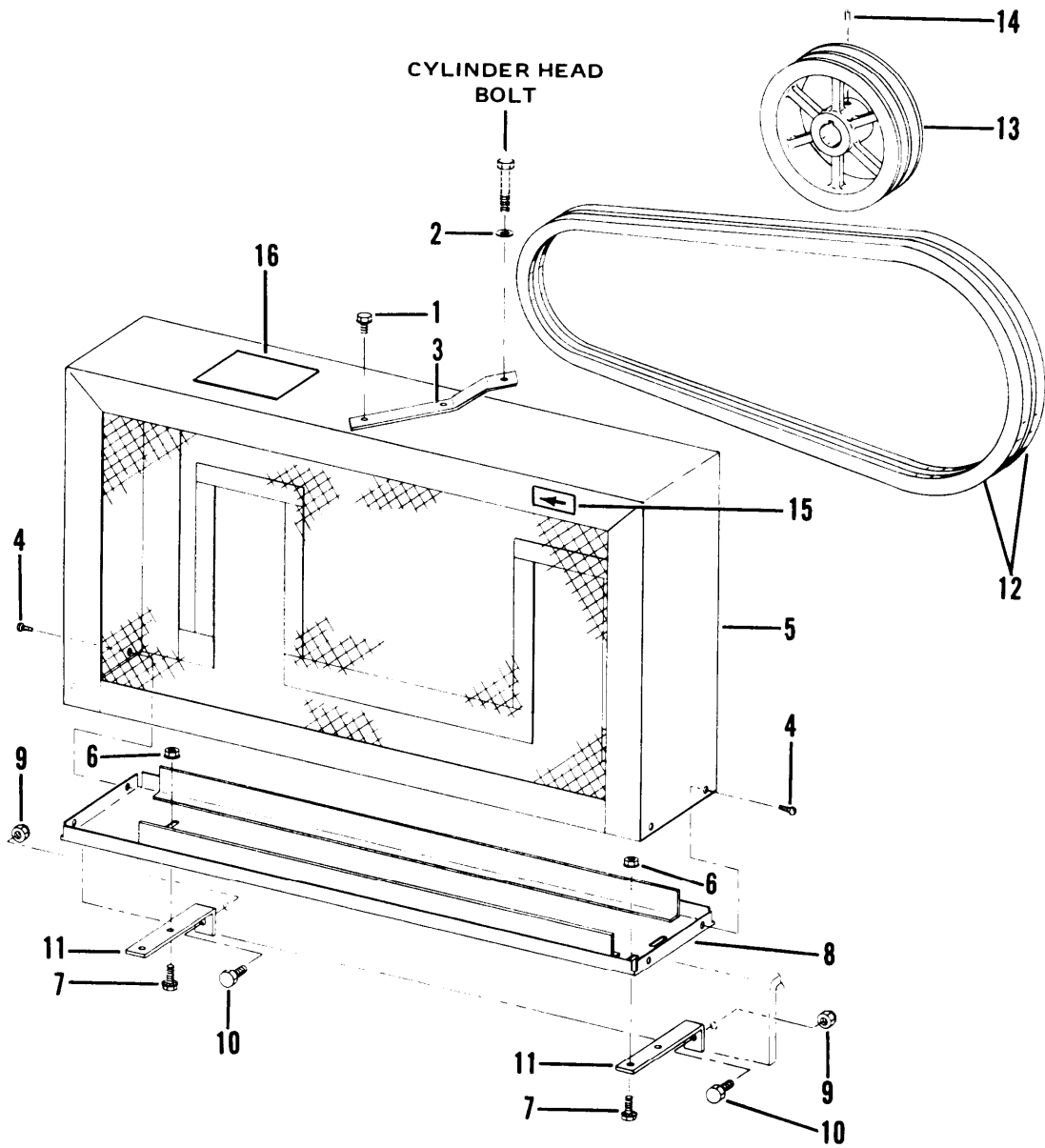


Figure 1. Belt guard, drive belts and pulley

SECTION II

(1) ITEM NO	(2) SMR CODE	(3) FSCM	(4) PART NUMBER	(5) DESCRIPTION AND USABLE ON CODES (UOC)	(6) QTY
				GROUP 01 COMPRESSOR DRIVE	
				FIG. 1 BELT GUARD, DRIVE BELTS AND PULLEY	
1	PAOZZ	24617	274825	SCREW, CAP, HEXAGON HEAD	2
2	PAOZZ	96906	MS27183-13	WASHER, FLAT	1
3	XDOZZ	16004	85455	BRACE, BELT GUARD	1
4	PAOZZ	16004	80476	SCREW, SELF TAPPING	4
5	PAOZZ	16004	84957	GUARD, MECHANICAL DRIVE	1
6	PAOZZ	16004	9416918	NUT, PLAIN, EXTENDED	4
7	PAOZZ	24617	274825	SCREW, CAP, HEXAGON HEAD	4
8	XBOZZ	16004	85402	BASE, BELT GUARD	1
9	PAOZZ	96906	MS51922-17	NUT, SELF LOCKING, HEXAGON	2
10	PAOZZ	96906	MS90725-60	SCREW, CAP, HEXAGON HEAD	2
11	XBOOO	16004	85454	BRACKET, SUPPORT, BELT GUARD	2
12	PAOZZ	81300	AP71	BELT, V	2
13	XBFZZ	76241	D2900	PULLEY, DRIVE, MOTOR	1
14	PAOZZ	96906	MS51963-83	SETSCREW	2
15	XBOZZ	16004	69719	DECAL, ROTATION	1
16	XBOZZ	16004	67093	DECAL, DRIVE BELTS	1
				END OF FIGURE	

SECTION IV

TM 5-4310-375-24P

NATIONAL STOCK NUMBER AND PART NUMBER INDEX

STOCK NUMBER	NATIONAL STOCK NUMBER INDEX	
	FIG.	ITEM
4310-01-179-2424	10	21
4310-01-179-2521	10	28
4820-01-179-5345	5	4
	11	1
4820-01-179-5372	11	16
4720-01-179-5414	12	2
4310-01-179-6057	8	5
4310-01-179-6058	8	8
4310-01-1794059	8	11
431041-179-6060	8	14
4310-01-179-6061	9	18
4310-01-179-6062	10	
4310-01-179-6172	9	6
4310431-179-6178	10	
4310-01-1794179	9	16
3110-01-180-6527	10	18
4730-01-181-5777	12	4
3120-01-185-2800	3	17

SECTION II

TM 5-4310-375-24P

(1) ITEM NO	(2) SMR CODE	(3) FSCM	(4) PART NUMBER	(5) DESCRIPTION AND USABLE ON CODES (UOC)	(6) QTY
				GROUP 02 ELECTRIC MOTOR AND CONTROLS	
				FIG. 2 STARTER ASSEMBLY, MOTOR CONTROLLER	
1	PAOZZ	16004	9416918	NUT, PLAIN, EXTENDED	4
2	PAOZZ	24617	274825	SCREW, CAP, HEXAGON HEAD	4
3	PAOZZ	96906	MS27183-11	WASHER, FLAT	2
4	XBOZZ	72971	11-50	BOX CONNECTOR, ELECTRICAL	1
5	XBOZZ	72971	12-50B	BOX CONNECTOR, ELECTRICAL	1
6	XBOZZ	16004	85481	CONDUIT, FLEXIBLE	1
7	PAOOO	16004	85359	CONTROL BOX ASSEMBLY	1
8	PAFZZ	16004	29084	.WIRE, ELECTRICAL, NO. 14 AWG, RED, 13 IN LONG	1
9	PAFZZ	16004	29084	.WIRE, ELECTRICAL, NO. 14 AWG, RED, 22 IN LONG	1
10	XBFZZ	16004	80557-1	.RESET, OVERLOAD	1
11	PAFZZ	27193	10250T20KB	.SWITCH, ROTARY	1
12	PAFZZ	15605	10250TM42	.PLATE, INSTRUCTION	1
13	PAOZZ	96906	MS35207-261	.SCREW, MACHINE, PANEL MOUNTING	4
14	XBOZZ	16004	85297-1	.PANEL, CONTACTOR MOUNTING	1
15	PAOZZ	96906	MS35649-202	.NUT, PLAIN, HEXAGON	3
16	PAOZZ	96906	MS35338-43	.WASHER, LOCK	3
17	PAOZZ	96906	MS35206-263	.SCREW, MACHINE, ROUND HEAD	3
18	PAFFF	27192	A11CNOB	.STARTER, MOTOR	1
19	PAFZZ	15605	C10CXB	..POWER UNIT, CONTACTOR	1
20	XBFZZ	27192	49-4114	...COVER, POWER UNIT	1
21	PAOZZ	15605	69-2765	...SPRING	1
22	PAOZZ	27192	48-1019	...ARMATURE LEVER	1
23	PAFZZ	27192	9-1887-2	...COIL, ELECTRICAL	1
24	PAFZZ	27192	H-1043	..HEATER, THERMAL RELE	3
25	PAFZZ	27192	6-23-2	.CONTACTS, SET	1
26	XBFZZ	27192	11-2280	..SCREW, STATIONARY CONTACT	6
27	XBFZZ	27192	23-5529	..CONTACT, STATIONARY	6
28	XBFZZ	27192	23-5528	..CONTACT, MOVABL.	3
29	XBFZZ	27192	55-1954	..RETAINER, CONTACT	3
30	XBFZZ	27192	69-4358	..SPRING, CONTACT	3
31	XBFZZ	02929	32F648	.PLUG, SHEET METAL	1
32	XBFZZ	16004	68749	.SCREW, SELF TAPPING	6
33	XBFZZ	16004	85487	.PLATE, VOLTAGE IDENTIFICATION	1
34	XBFZZ	16004	85488	.PLATE, OPERATION INSTRUCTIONS	1
35	XBFZZ	16004	84955-1	.ENCLOSURE, MOTOR CONTROLLER	1
				END OF FIGURE	

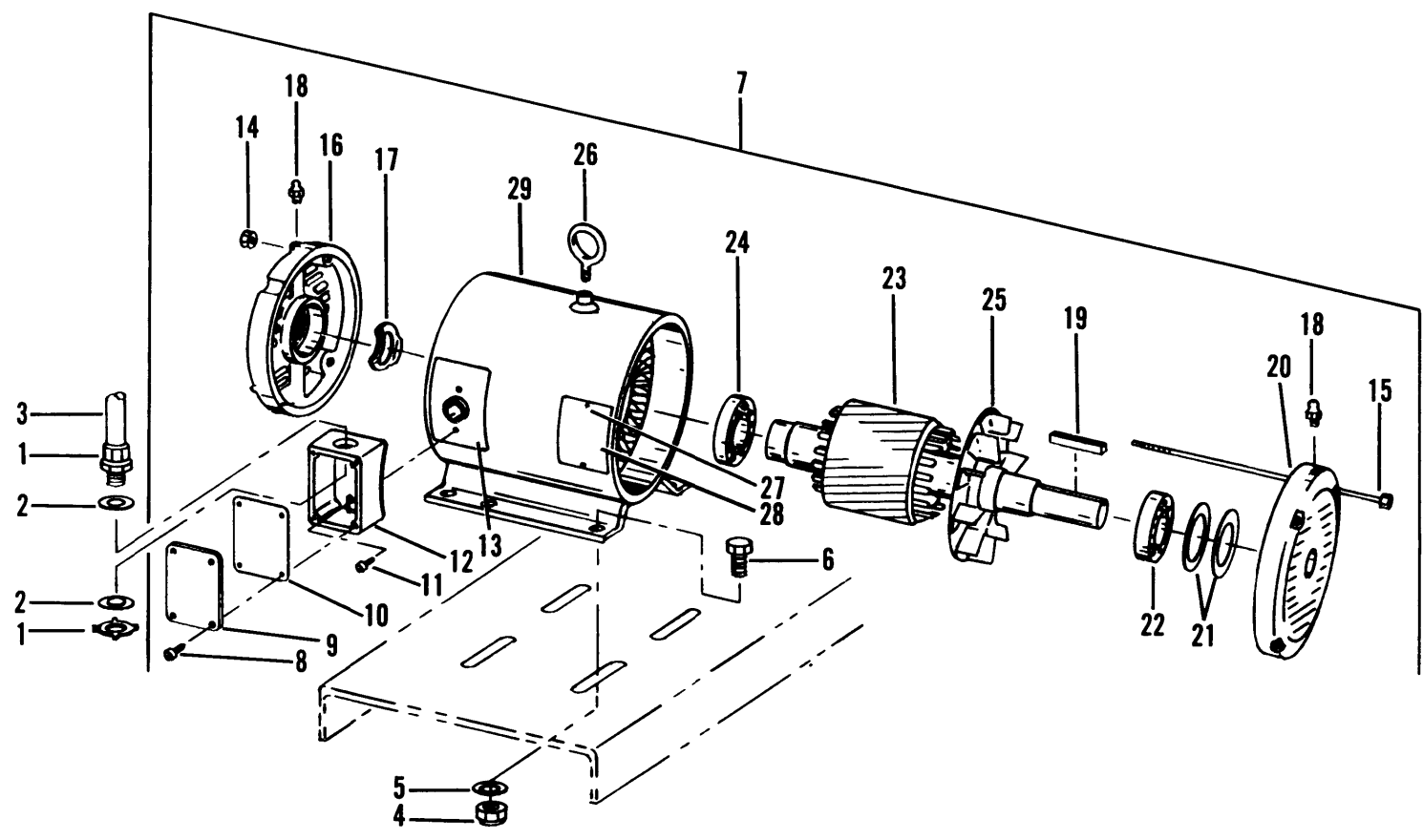


Figure 3. Electric motor assembly

(1) ITEM NO	(2) SMR CODE	(3) FSCM	(4) PART NUMBER	(5) DESCRIPTION AND USABLE ON CODES (UOC)	(6) QTY
				GROUP 02 ELECTRIC MOTOR AND CONTROLS	
				FIG. 3 ELECTRIC MOTOR ASSEMBLY	
1	PAOZZ	72971	11-50	BOX CONNECTOR, ELECTRICAL	1
2	PAOZZ	72971	201	WASHER, SHOULDERED	2
3	PAOZZ	16004	85480	CONDUIT, METAL, FLEXIBLE	1
4	PAOZZ	96906	MS51922-17	NUT, SELF LOCKING, HEXAGON	4
5	PAOZZ	96906	MS27183-13	WASHER, FLAT	4
6	PAOZZ	96906	MS90725-62	SCREW, CAP, HEXAGON HEAD	4
7	PAFFF	05472	M3311T	MOTOR ASSEMBLY, ELECTRIC	1
8	PAOZZ	96906	MS35206-244	.SCREW, MACHINE, CONDUIT BOX LID	4
9	XBOZZ	05472	37CB4500	.LID, CONDUIT BOX	1
10	XBOZZ	05472	37GS1001	.GASKET, LID	1
11	XBOZZ	05472	10XN2520A10	.SCREW, CONDUIT BOX	2
12	XBOZZ	05472	37CB3000	.BOX, CONDUIT	1
13	XBOZZ	05472	37GS1000	.GASKET, CONDUIT BOX	1
14	XBOZZ	05472	XY3118A12	.NUT, THROUGH BOLT	4
15	XBOZZ	05472	HA3104A14	.THROUGH BOLT	4
16	XBOZZ	05472	37EP3200A01	.ENDPLATE, CLOSED END	1
17	PAOZZ	05472	HW5100A06	.WASHER, THRUST	1
18	PAOZZ	05472	HW4500A01	.FITTING, LUBRICATION	2
19	PAFZZ	05472	MR5000A31	.KEY, MOTOR SHAFT	1
20	PAFZZ	05472	37EP3201A01	.ENDPLATE, SHAFT END	1
21	PAFZZ	05472	HA1000A34	.GUARD, BEARING	2
22	PAOZZ	05472	BG6307B03	.BEARING, SHAFT END	1
23	XBOZZ	05472	37RAB001X054	.ROTOR AND SHAFT	1
24	PAFZZ	05472	BG6206B03	.BEARING, CLOSED END	1
25	XBFZZ	05472	37FN4001A02	.FAN, INTERNAL	1
26	XBFZZ	05472	HW3200A01	.EYE BOLT	1
27	XBOZZ	05472	85XU0407A04	.SCREW, NAMEPLATE	2
28	XDOZZ	05472	NP0005	.NAMEPLATE, MOTOR	1
29	XBOZZ	05472	37SAB001X054	.STATOR ASSEMBLY	1
				END OF FIGURE	

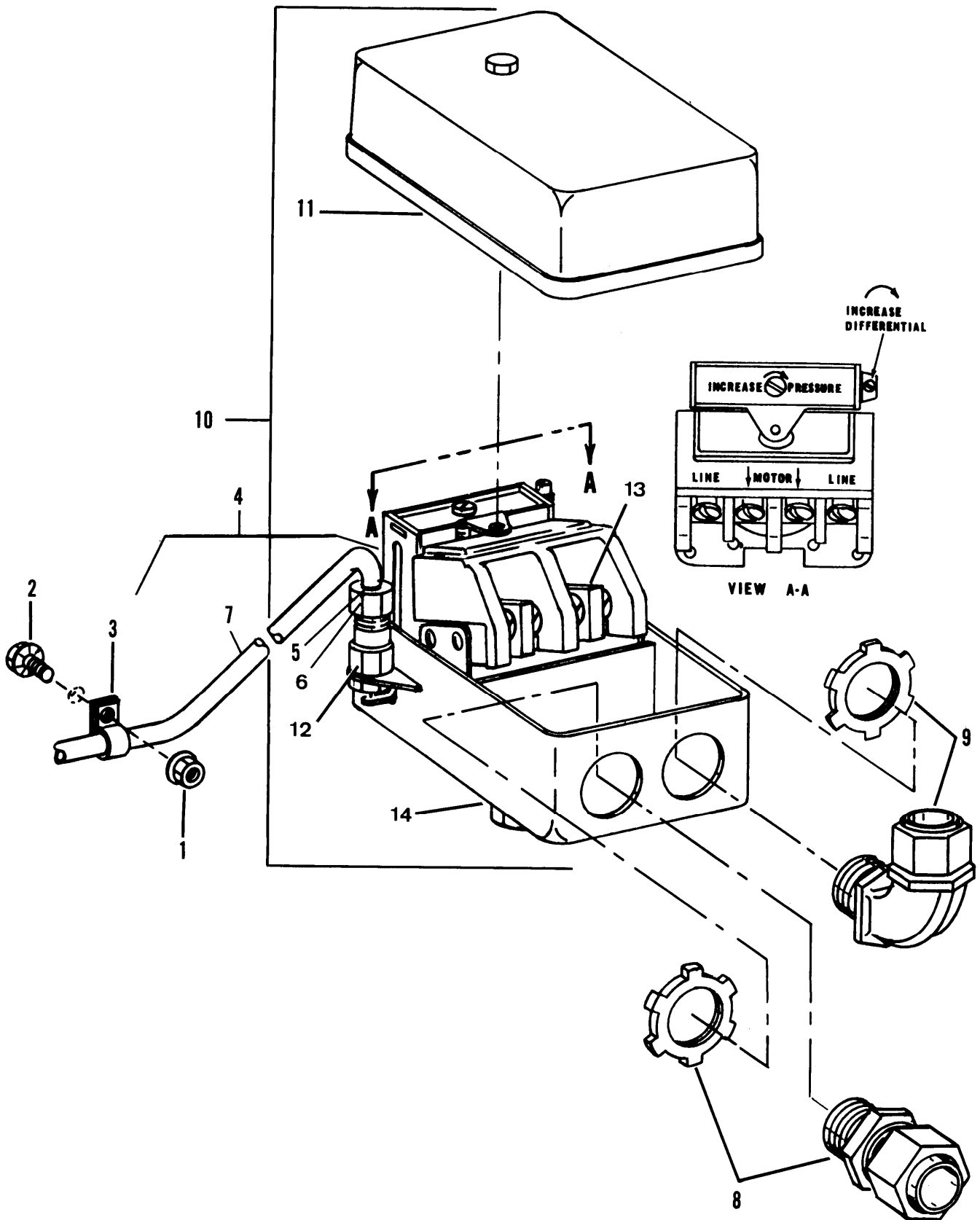


Figure 4. Pressure switch assembly

(1) ITEM NO	(2) SMR CODE	(3) FSCM	(4) PART NUMBER	(5) DESCRIPTION AND USABLE ON CODES (UOC)	(6) QTY
				GROUP 02 ELECTRIC MOTOR AND CONTROLS	
				FIG. 4 PRESSURE SWITCH ASSEMBLY	
1	PAFZZ	16004	9416918	NUT, PLAIN, EXTENDED	2
2	PAFZZ	24617	274825	SCREW, CAP, HEXAGON HEAD	2
3	PAFZZ	01276	900729-18	CLAMP, LOOP	2
4	PAFZZ	16004	85484	TUBE ASSEMBLY, METAL UNLOADER	1
5	PAFZZ	96906	MS39177-3	.SLEEVE, COMPRESSION	2
6	PAFZZ	96906	MS39-176-3	.NUT, TUBE COUPLING	2
7	XBOZZ	16004	50959	.TUBING, COPPER, 1/4 OD.	59
8	XBOZZ	72971	11-50	BOX CONNECTOR, ELECTRICAL	REF
9	XBOZZ	72971	12-50B	BOX CONNECTOR, ELECTRICAL	1
10	PAFFZ	23826	69HAU1	SWITCH, PRESSURE	1
11	XDFZZ	23826	D9271-15	.COVER, PRESSURE SWITCH	1
12	PAFZF	23826	D27100001	.UNLOADER VALVE PRESSURE SWITCH	1
13	KFFZZ	23826		.BOARD AND CONTACTS, PARTS OF KIT P/N75HA69	1
14	KFFZZ	23826		.DIAPHRAGM, PRESSURE SWITCH, PART OF KIT P/N 75HA60	1
	PAFZZ	23826	75HA69	REPAIR KIT, PRESSURE SWITCH	1
				BOARD AND CONTACTS, (1) 4-13	
				DIAPHRAGM, (1) 4-14	
				END OF FIGURE	

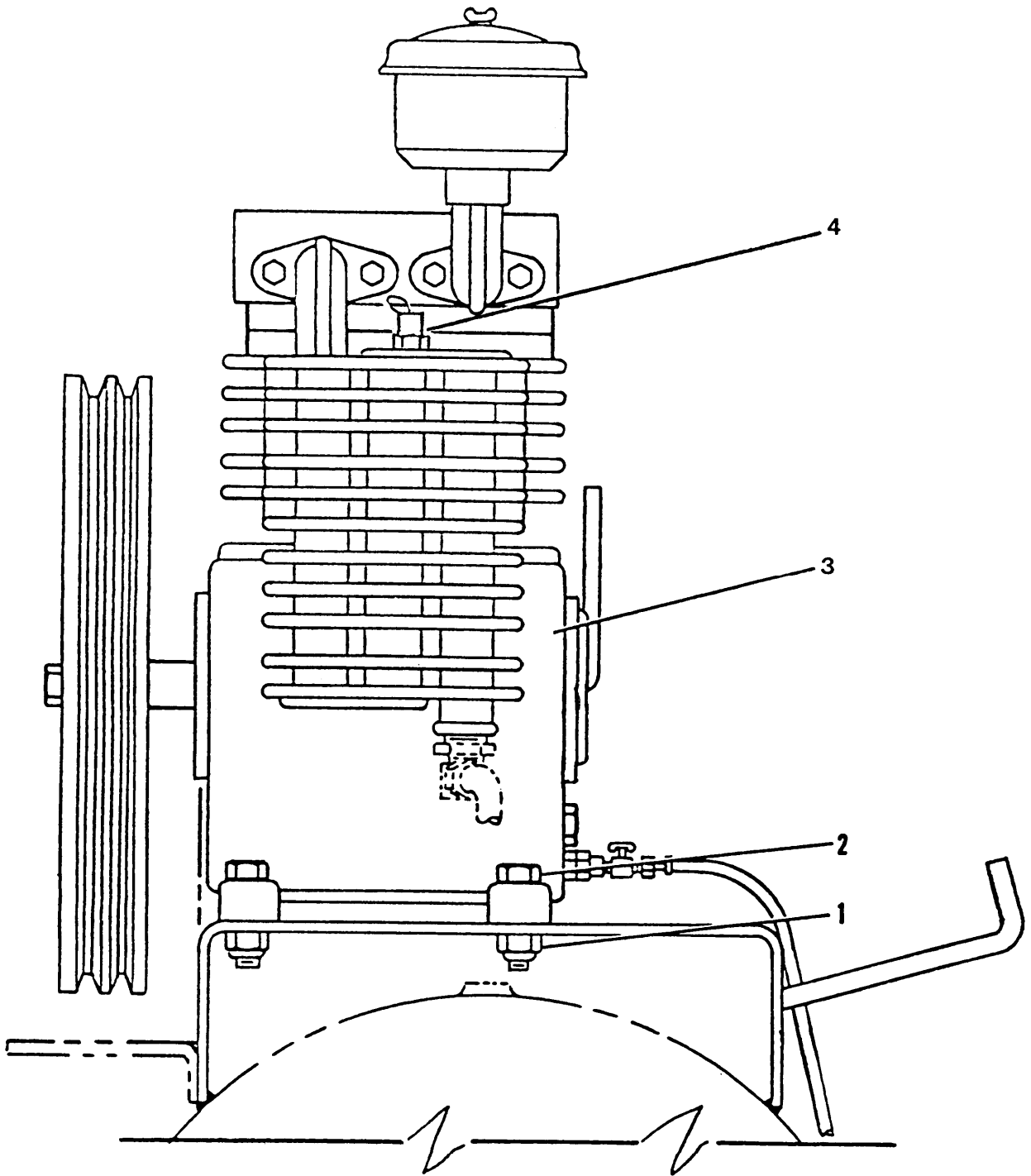


Figure 5. Air compressor assembly

SECTION II

TM 5-4310-375-24P

(1) ITEM NO	(2) SMR CODE	(3) FSCM	(4) PART NUMBER	(5) DESCRIPTION AND USABLE ON CODES (UOC)	(6) QTY
				GROUP 03 COMPRESSOR ASSEMBLY	
				FIG. 5 AIR COMPRESSOR ASSEMBLY	
1	PAOZZ	96906	MS51922-33	NUT, SELF LOCKING, HEXAGON	4
2	PAOZZ	96906	MS51095-416	SCREW, CAP, HEXAGON HEAD	4
3	PAOZZ	62106	T35	COMPRESSOR, RECIPROCATING, AIR.	1
4	PAOZZ	34494	48A22OPS11/ 4NPT	VALVE, SAFETY RELIEF	1
				END OF FIGURE	

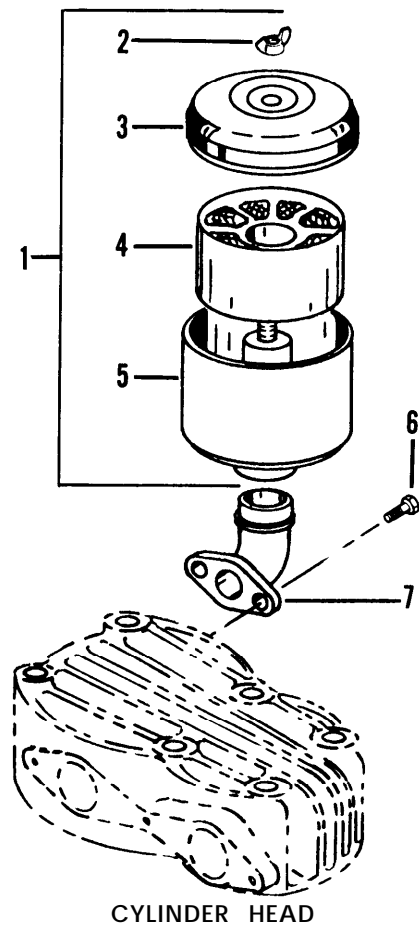


Figure 6. Inlet air filter assembly

(1) ITEM NO	(2) SMR CODE	(3) FSCM	(4) PART NUMBER	(5) DESCRIPTION AND USABLE ON CODES (UOC)	(6) QTY
				GROUP 03 COMPRESSOR ASSEMBLY	
				FIG. 6 INLET AIR FILTER ASSEMBLY	
1	PAOOO	62106	100.0.162	.FILTER ASSEMBLY, INLET	1
2	XAOZZ	62106		..NUT, WING	1
3	XAOZZ	62106		..COVER, INLET FILTER	1
4	XAOZZ	62106		..ELEMENT, INLET FILTER	1
5	XAOZZ	62106		..BASE, INLET FILTER	1
6	PAOZZ	62106	M10X25DIN9- 33-8.8	..SCREW, CAP, HEXAGON HEAD	2
7	XDOZZ	62106	100.0.120	.TUBE, INLET FILTER	1
				END OF FIGURE	

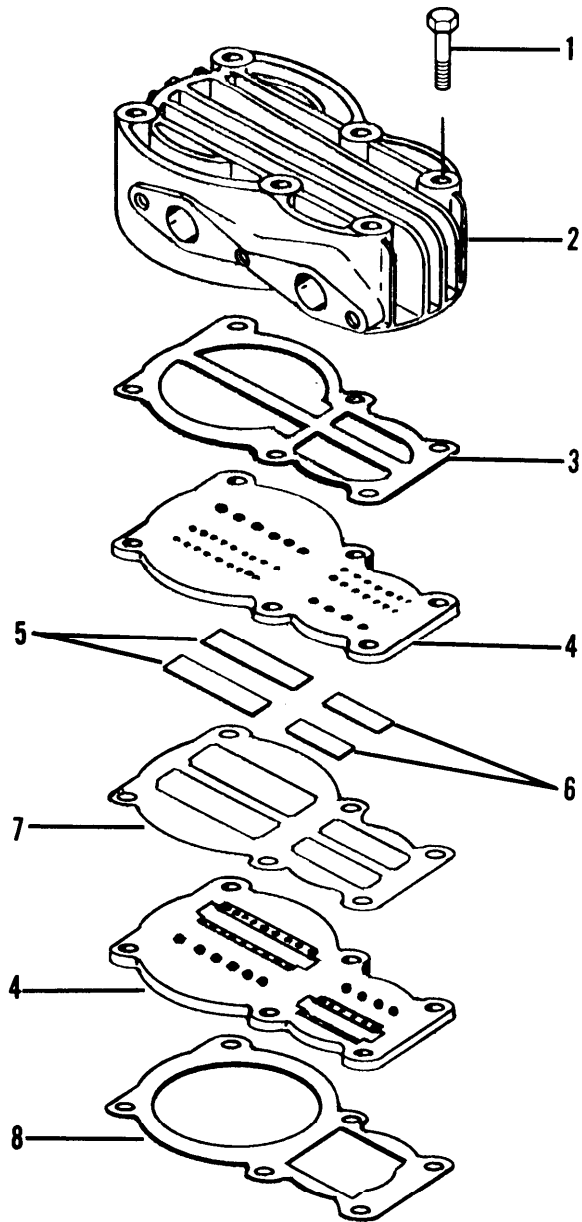


Figure 7. Cylinder head, first and second stage valves

(1) ITEM NO	(2) SMR CODE	(3) FSCM	(4) PART NUMBER	(5) DESCRIPTION AND USABLE ON CODES (UOC)	(6) QTY
				GROUP 03 COMPRESSOR ASSEMBLY	
				FIG. 7 CYLINDER HEAD, FIRST AND SECOND STAGE VALVES	
1	PAOZZ	62106	M10X90DIN- 931-8.8	.BOLT, CYLINDER HEAD	6
2	PAOZZ	62106	100.0.515	.CYLINDER HEAD, COMPRESSOR.	1
3	KFHZZ	62106	100.0.251	.GASKET, CYLINDER HEAD, PART OF KIT P/N 100.1.805 . . .	1
4	XBHZZ	62106	100.0.345	.PLATE, VALVE	2
5	KFHZZ	62106	100.0.525	.VALVE, LOW PRESSURE, PART OF KIT P/N 100.1.805	2
6	KFHZZ	62106	100.0.527	.VALVE, HIGH PRESSURE, PART OF KIT P/N 100.1.805.	2
7	KFOZZ	62106	100.0.240	.GASKET, VALVE PLATE, PART OF KIT P/N 100.1.805	1
8	KFOZZ	62106	100.0.198	.GASKET, VALVE, PART OF KIT P/N 100.1.805	1
				END OF FIGURE	

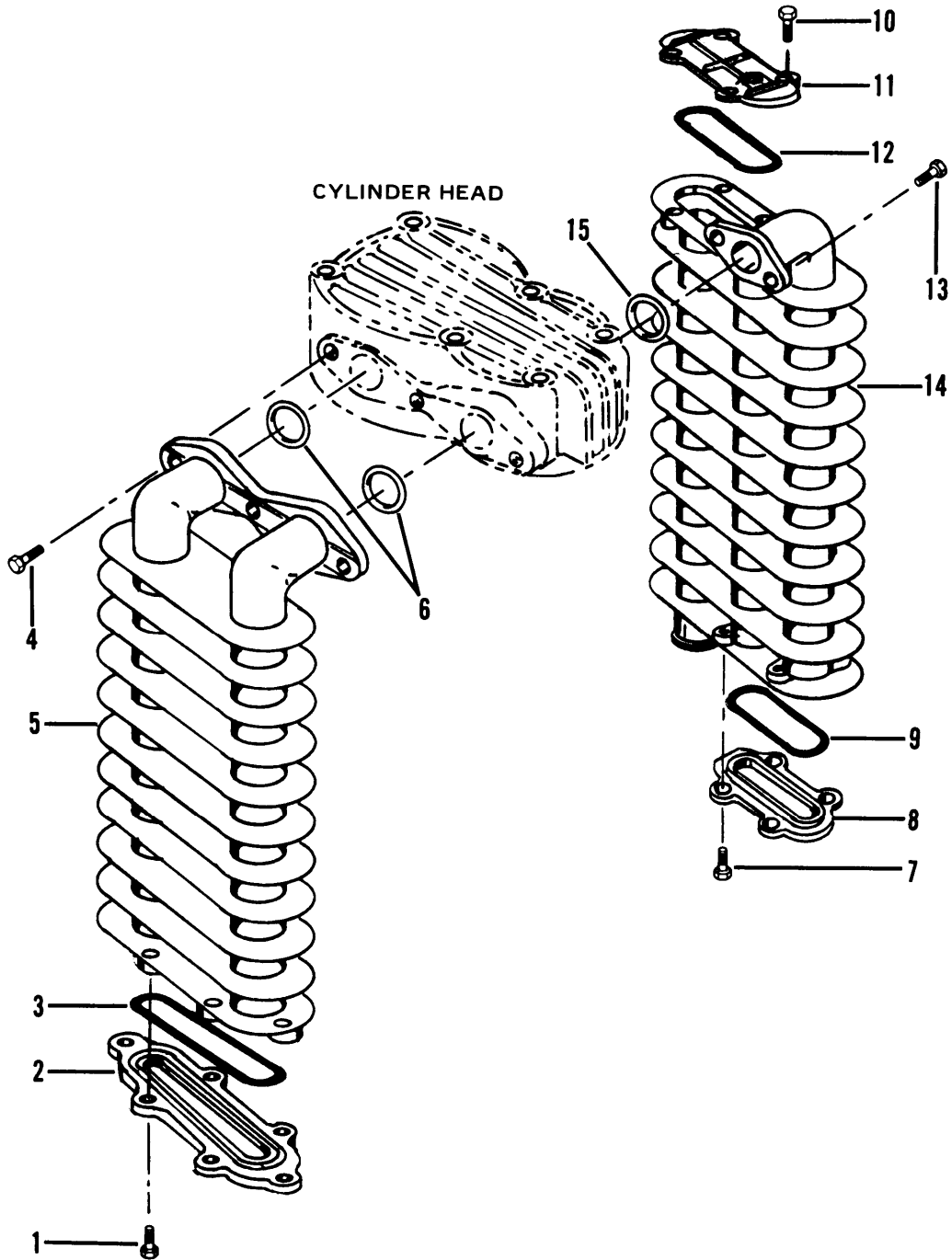


Figure 8. Intercooler and aftercooler

SECTION II

TM 5-4310-375-24P

(1) ITEM NO	(2) SMR CODE	(3) FSCM	(4) PART NUMBER	(5) DESCRIPTION AND USABLE ON CODES (UOC)	(6) QTY
				GROUP 03 COMPRESSOR ASSEMBLY	
				FIG. 8 INTERCOOLER AND AFTERCOOLER	
1	PAFZZ	62106	M6X12DIN933-8.8	.SCREW, INTERCOOLER CAP	6
2	PAHZZ	62106	100.0.107	.CAP, INTERCOOLER	1
3	KFOZZ	62106	100.0.201	.GASKET, INTERCOOLER CAP, PART OF KIT P/N 100.1.806	1
4	PAFZZ	62106	M10X25DIN-933-8.8	.SCREW, CAP, HEXAGON HEAD, INTERCOOLER FLANGE ..	3
5	PAFZZ	62106	100.0.087	.INTERCOOLER	1
6	KFOZZ	62106	100.0.322	.GASKET, INTERCOOLER, PART OF KIT P/N 100.1.806	2
7	PAOZZ	62106	M6X12DIN-933-8.8	.SCREW, AFTERCOOLER CAP	4
8	PAHZZ	62106	100.0.109	.CAP, LOWER, AFTERCOOLER	1
9	KFHZZ	62106	100.0.208	.GASKET, LOWER CAP, PART OF KIT P/N 100.1.806	1
10	PAFZZ	62106	M6X12DIN-933-8.8	.SCREW, AFTERCOOLER CAP	4
11	PAHZZ	62106	100.0.108	.CAP, UPPER, AFTERCOOLER	1
12	KFHZZ	62106	100.0.204	.GASKET, UPPER CAP, PART OF KIT P/N 100.1.806	1
13	PAFZZ	62106	M10X25DIN-933-8.8	.SCREW, CAP, HEXAGON HEAD	2
14	PAFZZ	62106	100.0.090	.AFTERCOOLER	1
15	KFOZZ	62106	100.0.322	.GASKET, COOLER, PART OF KIT P/N 100.1.806	1
				END OF FIGURE	

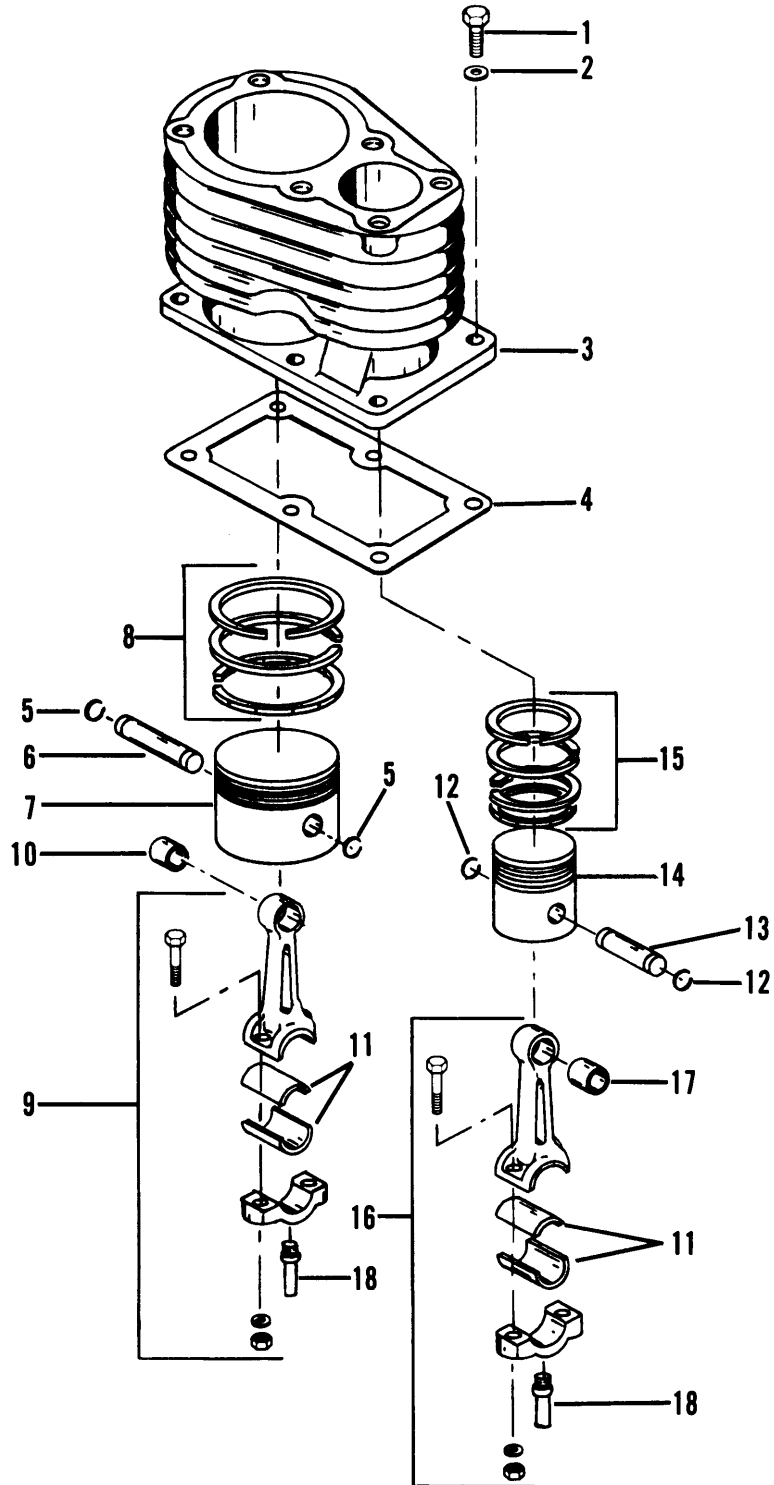


Figure 9. Cylinder, pistons and connecting rods

SECTION II

TM 5-4310-375-24P

(1) ITEM NO	(2) SMR CODE	(3) FSCM	(4) PART NUMBER	(5) DESCRIPTION AND USABLE ON CODES (UOC)	(6) QTY
				GROUP 03 COMPRESSOR ASSEMBLY	
				FIG. 9 CYLINDER, PISTONS AND CONNECTING RODS	
1	PAFZZ	62106	M10X25DIN- 933-8.8	.SCREW, CAP, HEXAGON HEAD	6
2	PAFZZ	62106	10.5DIN125ST	.WASHER, FLAT	6
3	XBHZZ	62106	100.0.079	.CYLINDER, COMPRESSOR	1
4	KFHZZ	62106	100.0.188	GASKET, FRAME, PART OF KIT P/N 100.1.806	1
5	PAHZZ	62106	100.0.432	.RING, RETAINING, LP PIN	2
6	PAFZZ	62106	100.0.495	.PIN, PISTON, LP	1
7	PAFZZ	62106	100.0.359	.PISTON, COMPRESSOR, LOW PRESSURE	1
7	PAFZZ	62106	100.0.673	.PISTON, COMPRESSOR, 0.5 MM, OVS	1
7	PAFZZ	62106	100.0.672	.PISTON, COMPRESSOR, 1.0 MM, OVS	1
8	KFHZZ	62106	100.8.062	.RING SET, PISTON, LP, PART OF KIT P/N 199.0.601	1
8	PAHZZ	62106	100.8.308	.RING SET, PISTON, 0.5 MM, OVS	1
8	PAHZZ	62106	100.8.309	.RING SET, PISTON, 1.0 MM OVS	1
9	PAHZH	62106	100.8.034	.CONNECTING ROD, PISTON, LP	1
10	KFHZZ	62106	100.0.053	.BUSHING, PISTON PIN, LP, PART OF KIT P/N 199.0.601	1
11	KFFZZ	62106	100.0.298	.INSERT, CONNECTING ROD, PART OF KIT P/N 199.0.601	2
11	PAFZZ	62106	100.0.743	.BEARING HALF SET	1
11	PAFZZ	62106	100.0.744	.BEARING HALF SET	1
12	PAHZZ	62106	100.0.431	.RING, RETAINING, HP PIN	2
13	PAFZZ	62106	100.0.491	.PIN, PISTON	1
14	PAFZZ	62106	100.0.366	.PISTON, COMPRESSOR, HIGH PRESSURE	1
14	PAFZZ	62106	100.0.680	.PISTON, COMPRESSOR	1
14	PAFZZ	62106	100.0.681	.PISTON, COMPRESSOR	1
15	KFHZZ	62106	100.8.061	.RING SET, PISTON, HP, PART OF KIT P/N 199.0.601	1
15	PAFZZ	62106	100.8.310	.RING SET, PISTON	1
15	PAHZZ	62106	100.8.311	.RING SET, PISTON	1
16	PAHZZ	62106	100.8.033	.CONNECTING ROD, PISTON, HP	1
17	KFHZZ	62106	100.0.052	.BUSHING, PISTON PIN, HP, PART OF KIT P/N 199.0.601	1
18	PAHZZ	62106	100.0.021	.ROD, OIL SPLASH	2
				END OF FIGURE	

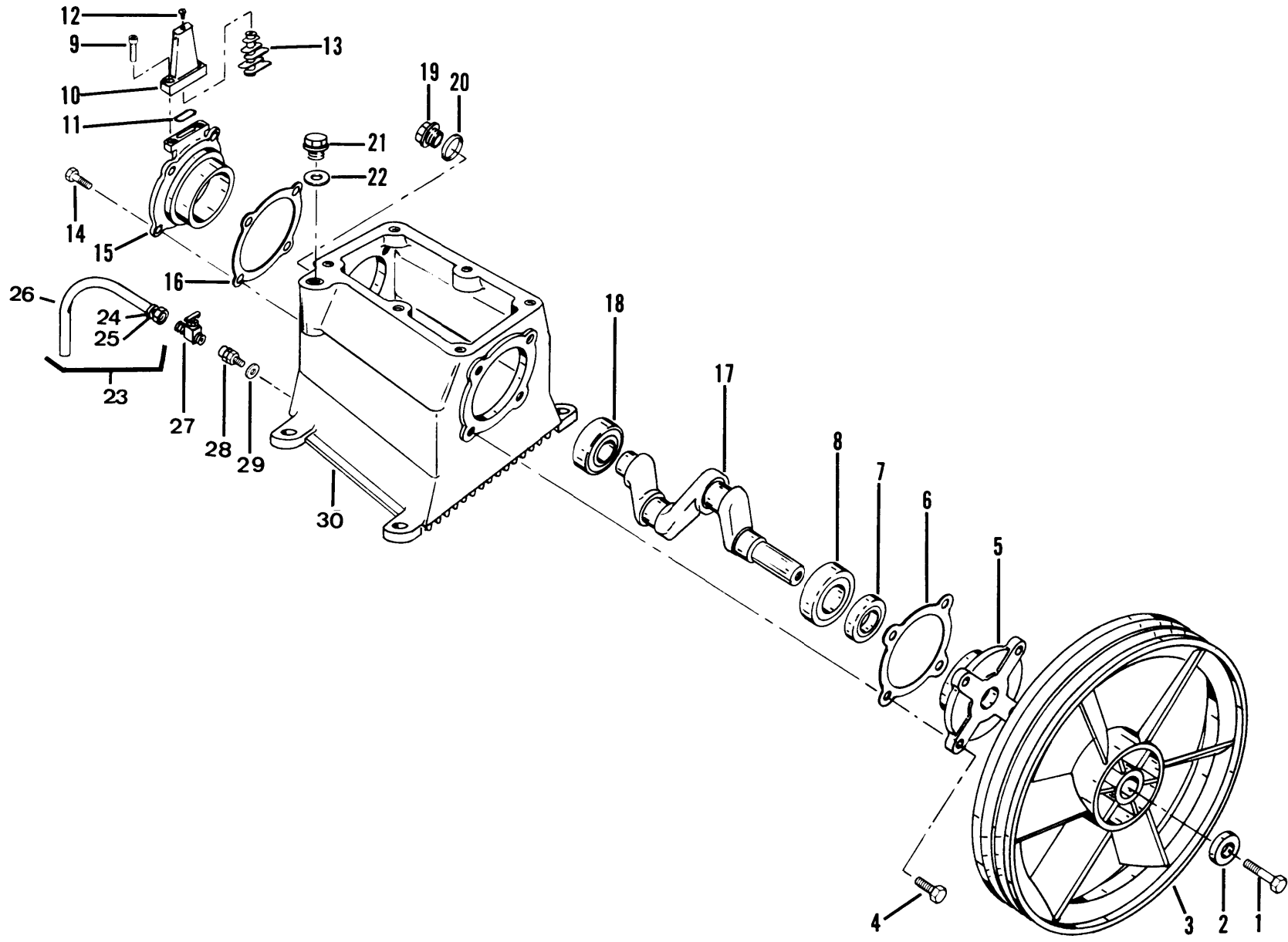


Figure 10. Flywheel, crankshaft, bearings, seal, and frame

(1) ITEM NO	(2) SMR CODE	(3) FSCM	(4) PART NUMBER	(5) DESCRIPTION AND USABLE ON CODES (UOC)	(6) QTY
				GROUP 03 COMPRESSOR ASSEMBLY	
				FIG. 10 FLYWHEEL, CRANKSHAFT, BEARINGS, SEAL AND FRAME	
1	PAOZZ	62106	M10X30LH	.BOLT, FLYWHEEL, LH	1
2	PAOZZ	62983	471063	.WASHER, FLAT	1
3	PFOZZ	62106	100.0.649	.FLYWHEEL, COMPRESSOR	1
4	PAFZZ	62106	M10X25DIN- 933-8.8	.SCREW, CAP, HEXAGON HEAD	4
5	PAFZZ	62106	100.0.473	.PLATE, FRONT	1
6	PAFZZ	62106	100.0.262	.GASKET, PART OF KIT P/N 100.1.806	1
7	PAFZZ	62106	100.0.329	.PACKING ASSEMBLY	1
8	PAFZZ	62106	100.0.127	.BEARING, MAIN, FRONT	1
9	PAFZZ	62106	100.0.620	.SCREW, CRANKCASE VENT	2
10	PAFZZ	62106	100.8.133	.VENT, CRANKCASE	1
11	PAFZZ	62106	100.0.302	.GASKET, CRANKCASE VENT	1
12	PAFZZ	62106	100.8.133S	.SCREW, VENT BAFFLE	1
13	XBFZZ	62106	100.8.133B	.BAFFLE, VENT	1
14	PAFZZ	62106	M10X25DIN- 933-8.8	.SCREW, CAP, HEXAGON HEAD	4
15	PAFZZ	62106	100.0.482	.PLATE, REAR	1
16	XDOZZ	62106	100.0.262	.GASKET, PART OF KIT P/N 100.1.806	1
17	PAFZZ	62106	100.0.006	.CRANKSHAFT, COMPRESSOR	1
18	PAFZZ	62106	100.0.128	.BEARING, MAIN, REAR	1
19	PAFZZ	62106	100.0.306	.INDICATOR, SIGHT, LIQUID	1
20	XBFZZ	62106	100.0.230	.GASKET, SIGHT GLASS	1
21	PAOZZ	62106	100.0.501	.CAP, FILLER OPENING	1
22	XDOZZ	62106	100.0.269	.GASKET, CAP, FILLER	1
23	XDOZZ	16004	80978	.HOSE ASSEMBLY, OIL DRAIN	1
24	XDOZZ	04255	60X5	..SLEEVE, TUBE	1
25	XDOZZ	79470	61X5	..NUT, TUBE	1
26	XDOZZ	79470	H-101-4	..HOSE, OIL DRAIN	16
27	PBOZZ	79470	A660	.COCK, SHUTOFF, SCREW	1
28	PAOZZ	16004	85512	.DRAIN ASSEMBLY, OIL	1
29	PCOZZ	01276	DA120184- B-01	.GASKET	1
30	XBHZZ	62106	100.0.035	.FRAME, CRANKCASE	1
	PAOZZ	62106	100.1.806	.KIT, OIL GASKET, PART OF KIT P/N 199.0.601	1
				GASKET, (1) 8-3	
				GASKET, (1) 10-6	
				GASKET, (1) 10-16	
				GASKET, COOLER, (1) 8-15	
				GASKET, FRAME, (1) 9-4	
				GASKET, INTERCOOLER, (2) 8-6	
				GASKET, LOWER CAP, (1) 8-9	
				GASKET, UPPER CAP, (1) 8-12	
				.KIT, PRESSURE GASKET PART OF KIT P/N199.0.601	1
				GASKET, (1) 7-3	
				GASKET, VALVE PLATE, (1) 7-7	
				GASKET VALVE, (1) 7-8	
				VALVE, (2) 7-6	

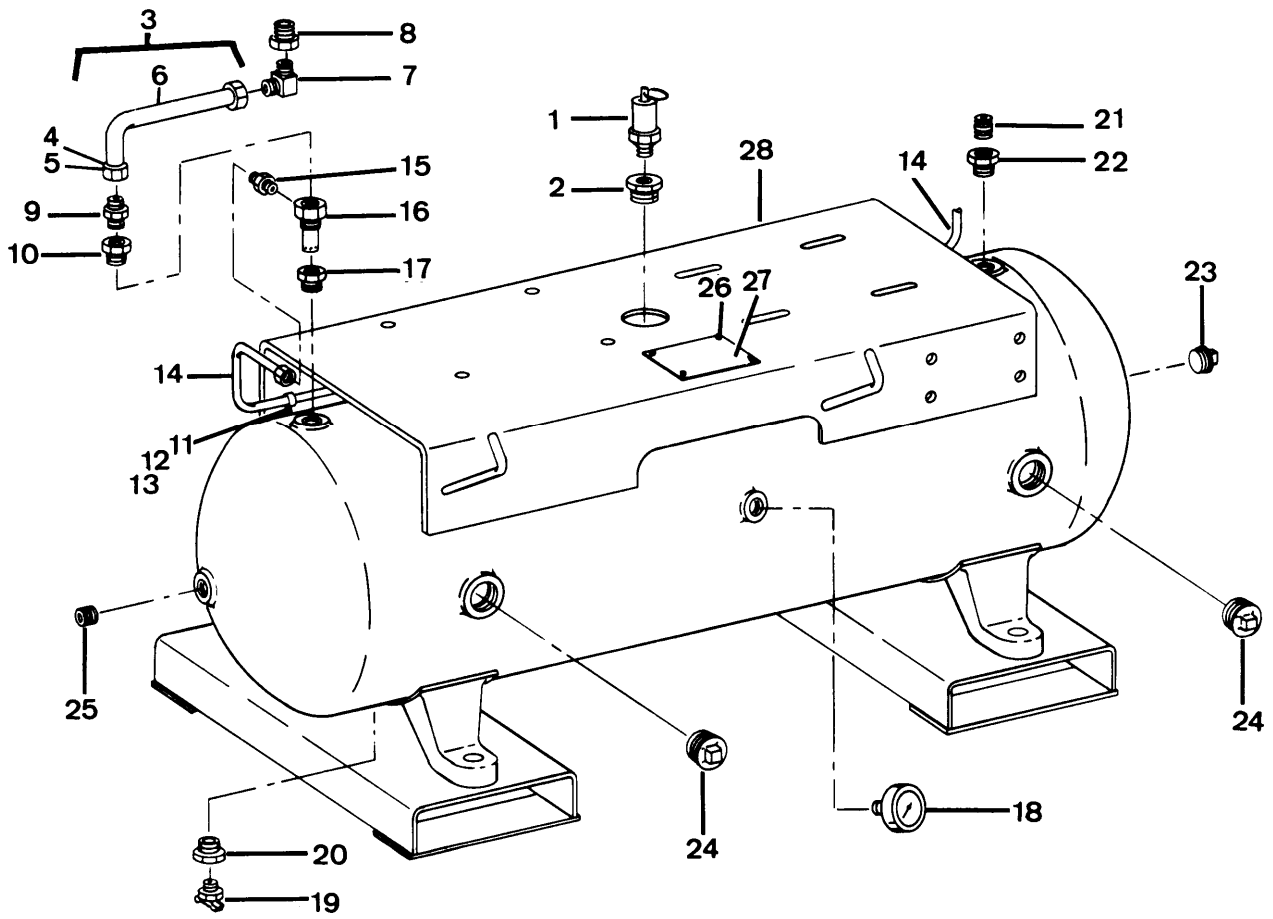


Figure 11. Air receiver tank, gauge and valves

(1) ITEM NO	(2) SMR CODE	(3) FSCM	(4) PART NUMBER	(5) DESCRIPTION AND USABLE ON CODES (UOC)	(6) QTY
				GROUP 04 AIR RECEIVER SYSTEM	
				FIG. 11 AIR RECEIVER TANK, GAUGE AND VALVES	
1	PAOZZ	34494	48A22OPS11/ 4NPT	VALVE, SAFETY RELIEF	1
2	XBOZZ	16004	67730	BUSHING, REDUCING	1
3		16004	85482	TUBE, ASSEMBLY, METAL, AIR OUT	1
3	XBOZZ	16004	85482	TUBE, ASSEMBLY, METAL	1
4		79470	60X8	.SLEEVE, COMPRESSION	2
4	PAOZZ	79470	60X12	.SLEEVE, TUBING	2
5	PAOZZ	79470	61X12	.NUT, TUBE COUPLING	2
6	XAOZZ	16004	51092	.TUBING, COPPER, 3/4 OD, 7 IN. LONG	1
7	XBOZZ	79470	B69X12X12	ELBOW, TUBING	1
8	XBOZZ	24617	144056	BUSHING, PIPE	1
9	XBOZZ	79470	B68X12X12	CONNECTOR, TUBING	1
10	XBOZZ	24617	144129	ELBOW, PIPE, 3/4 NPT	1
10	PAOZZ	96906	MS51953-104	NIPPLE, PIPE	1
11	PAFZZ	24617	9416918	NUT, PLAIN, EXTENDED	REF
12	PAOZZ	24617	274825	SCREW, CAP, HEXAGON HEAD	REF
13	PAFZZ	01276	900729-18	CLAMP, LOOP	REF
14	PAFZZ	16004	85484	TUBE ASSEMBLY, METAL UNLOADER	REF
15	XDOZZ	79470	68X4BODY ONLY	CONNECTOR, TUBE	1
16	PAOZZ	58818	P7575A(S)	VALVE, CHECK	1
17	XBOZZ	16004	144056	BUSHING, REDUCING	1
18	PAOZZ	61349	102043	GAGE, PRESSURE, DIAL	1
19	PAOZZ	96906	MS35782-6	COCK, DRAIN	1
20	XBOZZ	24617	144041	BUSHING REDUCING	1
21	PAOZZ	96906	MS51953-49	NIPPLE, PIPE	1
22	XBOZZ	16004	144054	BUSHING, REDUCING	1
23	PAOZZ	96906	MS20913-10S	PLUG, PIPE	1
24	PAOZZ	96906	MS49005-18	PLUG, PIPE	2
25	PAOZZ	96906	MS51953-97	NIPPLE, PIPE	1
26	PAOZZ	16004	68749	SCREW, TAPPING	4
27	XBOZZ	16004	66794	PLATE, IDENTIFICATION, UNIT	1
28	XDFZZ	16004	84952	RECEIVER, AIR	1
				END OF FIGURE	

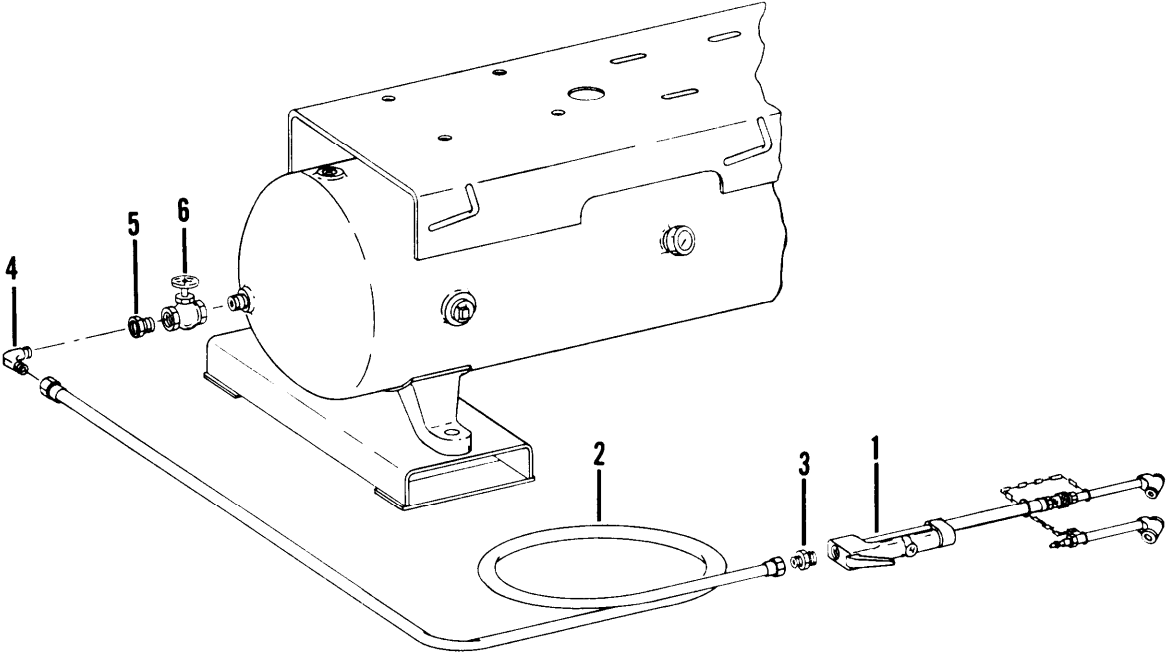


Figure 12. Discharge hose, inflator gauge and valve

(1) ITEM NO	(2) SMR CODE	(3) FSCM	(4) PART NUMBER	(5) DESCRIPTION AND USABLE ON CODES (UOC)	(6) QTY
				GROUP 05 AIR DISCHARGE SYSTEM	
				FIG. 12 DISCHARGE HOSE, INFLATER GAUGE AND VALVE	
1	PAOZZ	94894	61J2-1506	INFLATOR GAGE, PNEUMATIC	1
2	PAOZZ	16004	85403	HOSE ASSEMBLY, NONMETALLIC, AIR, 50 FT.	1
3	PAOZZ	79470	3325X4	NIPPLE, PIPE	1
4	PAOZZ	45681	1/4CR-B	ELBOW, PIPE	1
5	XBOZZ	24617	144040	BUSHING, REDUCING	1
6	PAOZZ	14652	125T	VALVE, GLOBE, 3/4 NPT	1
				END OF FIGURE	

NATIONAL STOCK NUMBER AND PART NUMBER INDEX

STOCK NUMBER	NATIONAL STOCK NUMBER INDEX				FIG.	ITEM
	FIG.	ITEM	STOCK NUMBER	FIG.		
5945-00-001-5933	2	22	5999-01-170-0849	2	24	
4730-00-011-4627	4	6	4310-01-175-0764	2	7	
4730-00-019-2067	11	21	4330-01-175-0765	6	1	
5310-00-045-3296	2	16	9905-01-175-7158	2	12	
5310-00-087-4652	1	9	6105-01-175-9981	3	20	
	3	4	6685-01-176-3442	11	18	
5310-00-125-9924	3	2	4310-01-176-8397	9	7	
4820-00-142-2122	10	27	5930-01-176-9001	2	11	
5945-00-165-0369	2	25	4310-01-177-2178	9	8	
4730-00-196-1468	11	25	4310-01-177-2179	9	8	
4730-00-196-1499	11	10	4310-01-177-2180	9	15	
3030-00-204-2071	1	12	4310-01-177-2181	9	15	
4910-00-204-2644	12	1	4310-01-177-2199	9	7	
4730-00-221-2142	11	23	4310-01-177-2200	9	7	
5310-00-225-6993	5	1	4310-01-177-2201	9	14	
4730-00-240-1740	11	5	4310-01-177-2202	9	14	
5305-00-269-3213	3	6	4310-01-177-2203	9	14	
4820-00-276-9041	11	19	6110-01-177-3697	2	18	
4730-00-277-8289	12	3	5360-01-177-7995	2	21	
4730-00-278-8763	4	5	5315-01-177-7996	3	19	
4730-00-278-8767	11	4	5305-01-177-7997	10	9	
4730-00-287-1835	11	24	5305-01-177-7998	10	12	
5950-00-409-2192	2	23	5330-01-177-8255	10	6	
5340-00-482-6835	4	3	5330-01-177-8256	10	11	
	11	13	5330-01-177-8303	10	7	
5930-00-521-8471	4		3120-01-177-8391	9	11	
5930-00-539-2108	4	10	3120-01-177-8392	9	11	
5975-00-578-3666	3	1	6680-01-177-9439	10	19	
5305-00-724-5898	1	14	5305-01-177-9709	1	4	
5310-00-809-3078	2	3	3110-01-178-1534	3	22	
5310-00-934-9758	2	15	5306-01-178-1535	10	1	
5305-00-964-0589	5	2	3110-01-178-1536	10	8	
5305-00-984-6192	3	8	4310-01-178-2874	2	19	
5305-00-984-6210	2	17	4310-01-178-2875	10	15	
5305-00-990-6444	2	13	4820-01-178-2936	12	6	
5310-01-012-8962	1	6	4310-01-178-3298	10	3	
	2	1	4310-01-178-3299	10	5	
	4	1	4310-01-178-3301	10		
	11	11	4310-01-178-3322	9	13	
5305-01-056-1501	1	1	4310-01-178-3342	10	17	
	1	7	4310-01-178-3343	7	2	
	2	2	4710-01-178-6433	11	3	
	11	12	4310-01-178-8741	8	2	
5330-01-074-0063	10	29	4310-01-178-9431	10	10	
5310-01-117-2410	10	2	4710-01-178-9969	4	4	
5305-01-118-7424	11	26		11	14	
6105-01-162-5061	3	7	5365-01-179-1268	9	5	
4310-01-163-9558	5	3	5365-01-179-1269	9	12	
4820-01-165-3746	4	12	5310-01-179-1287	9	2	

NATIONAL STOCK NUMBER AND PART NUMBER INDEX

STOCK NUMBER	NATIONAL STOCK NUMBER INDEX	
	FIG.	ITEM
4310-01-179-2424	10	21
4310-01-179-2521	10	28
4820-01-179-5345	5	4
	11	1
4820-01-179-5372	11	16
4720-01-179-5414	12	2
4310-01-179-6057	8	5
4310-01-179-6058	8	8
4310-01-179-6059	8	11
4310-01-179-6060	8	14
4310-01-179-6061	9	18
4310-01-179-6062	10	
4310-01-179-6172	9	6
4310-01-179-6178	10	
4310-01-179-6179	9	16
3110-01-180-6527	10	18
4730-01-181-5777	12	4
3120-01-185-2800	3	17

NATIONAL STOCK NUMBER AND PART NUMBER INDEX

FSCM	PART NUMBER	PART NUMBER INDEX STOCK NUMBER	FIG.	ITEM
81300	AP71	3030-00-204-2071	1	12
27192	A11CNOB	6110-01-177-3697	2	18
79470	A660	4820-00-142-2122	10	27
05472	BG6206B03		3	24
05472	BG6307B03	3110-01-178-1534	3	22
79470	B68X12X12		11	9
79470	B69X12X12		11	7
15605	C1CXB	4310-01-178-2874	2	19
01276	DA120184-8-01	5330-01-074-0063	10	29
23826	D27100001	4820-01-165-3746	4	12
76241	D2900		1	13
23826	D9271-15		4	11
79470	H-101-4		10	26
27192	H-1043	5999-01-170-0849	2	24
05472	HA1000A34		3	21
05472	HA3104A14		3	15
05472	HW3200A01		3	26
05472	HW4500A01		3	18
05472	HW5100A06	3120-01-185-2800	3	17
05472	MR500A31	5315-01-177-7996	3	19
96906	MS20913-10S	4730-00-221-2142	11	23
96906	MS27183-11	5310-00-809-3078	2	3
96906	MS27183-13		1	2
			3	5
96906	MS35206-244	5305-00-984-6192	3	8
96906	MS35206-263	5305-00-984-6210	2	17
96906	MS35207-261	5305-00-990-6444	2	13
96906	MS35338-43	5310-00-045-3296	2	16
96906	MS35649-202	5310-00-934-9758	2	15
96906	MS35782-6	4820-00-276-9041	11	19
96906	MS39176-3	4730-00-011-4627	4	6
96906	MS39177-3	4730-00-278-8763	4	5
96906	MS49005-18	4730-00-287-1835	11	24
96906	MS51095-416	5305-00-964-0589	5	2
96906	MS51922-17	5310-00-087-4652	1	9
			3	4
96906	MS51922-33	5310-00-225-6993	5	1
96906	MS51953-104	4730-00-196-1499	11	10
96906	MS51953-49	4730-00-019-2067	11	21
96906	MS51953-97	4730-00-196-1468	11	25
96906	MS51963-83	5305-00-724-5858	1	14
96906	MS90725-60		1	10
96906	MS90725-62	5305-00-269-3213	3	6
62106	M10X25DIN933-8.8		6	6
			8	4
			8	13
			9	1
			10	4
			10	14

NATIONAL STOCK NUMBER AND PART NUMBER INDEX

FSCM	PART NUMBER	PART NUMBER INDEX STOCK NUMBER	FIG.	ITEM
62106	M10X30LH	5306-01-178-1535	10	1
62106	M10X90DIN931-8.8		7	1
05472	M3311T	6105-01-162-5061	3	7
62106	M6X12DIN933-8.8		8	1
			8	7
			8	10
23826			4	13
			4	14
			6	2
			6	3
			6	4
			6	5
05472	NP005		3	28
58818	P7575S(T)	4820-01-179-5372	11	16
62106	T35	4310-01-163-9558	5	3
05472	XY3118A12		3	14
45681	1/4CR-B	4730-01-181-5777	12	4
62106	10.5DIN125ST	5310-01-179-1287	9	2
05472	10XN2520A10		3	11
62106	100.0.006	4310-01-178-3342	10	17
62106	100.0.021	4310-01-179-6061	9	18
62106	100.0.035		10	30
62106	100.0.052		9	17
62106	100.0.053		9	10
62106	100.0.079		9	3
62106	100.0.087	4310-01-179-6057	8	5
62106	100.0.090	4310-01-179-6060	8	14
62106	100.0.107	4310-01-178-8741	8	2
62106	100.0.108	4310-01-179-6059	8	11
62106	100.0.109	4310-01-179-6058	8	8
62106	100.0.120		6	7
62106	100.0.127	3110-01-178-1536	10	8
62106	100.0.128	3110-01-180-6527	10	18
62106	100.0.162	4330-01-175-0765	6	1
62106	100.0.188		9	4
62106	100.0.198		7	8
62106	100.0.201		8	3
62106	100.0.204		8	12
62106	100.0.208		8	9
62106	100.0.230		10	20
62106	100.0.240		7	7
62106	100.0.251		7	3
62106	100.0.262	5330-01-177-8255	10	6
			10	16
62106	100.0.269		10	22
62106	100.0.298		9	11
62106	100.0.302	5330-01-177-8256	10	11
62106	100.0.306	6680-01-177-9439	10	19
62106	100.0.322		8	6
			8	15
62106	100.0.329	5330-01-177-8303	10	7

NATIONAL STOCK NUMBER AND PART NUMBER INDEX

FSCM	PART NUMBER	PART NUMBER INDEX STOCK NUMBER	FIG.	ITEM
62106	100.0.345		7	4
62106	100.0.359	4310-01-176-8397	9	7
62106	100.0.366	4310-01-177-2201	9	14
62106	100.0.431	5365-01-179-1269	9	12
62106	100.0.432		9	5
62106	100.0.473	4310-01-178-3299	10	5
62106	100.0.482	4310-01-78-2875	10	15
62106	100.0.491	4310-01-178-3322	9	13
62106	100.0.495	4310-01-179-6172	9	6
62106	100.0.501	4310-01-179-2424	10	21
62106	100.0.515	4310-01-178-3343	7	2
62106	100.0.525		7	5
62106	100.0.527		7	6
62106	100.0.620	5305-01-177-7997	10	9
62106	100.0.649	4310-01-178-3298	10	3
62106	100.0.672	4310-01-177-2200	9	7
62106	100.0.673	4310-01-177-2199	9	7
62106	100.0.680	4310-01-177-2202	9	14
62106	100.0.681	4310-01-177-2203	9	14
62106	100.0.743	3120-01-177-8391	9	11
62106	100.0.744	3120-01-177-8392	9	11
62106	100.1.805	4310-01-179-6062	10	
62106	100.1.806	4310-01-178-3301	10	
62106	100.8.033	4310-01-179-6179	9	16
62106	100.8.034		9	9
62106	100.8.061		9	15
62106	100.8.062		9	8
62106	100.8.133	4310-01-178-9431	10	10
62106	100.8.133B		10	13
62106	100.8.133S	5305-01-177-7998	10	12
62106	100.8.308	4310-01-177-2178	9	8
62106	100.8.309	4310-01-177-2179	9	8
62106	100.8.310	4310-01-177-2180	9	15
62106	100.8.311	4310-01-177-2181	9	15
61349	102043	6685-01-176-3442	11	18
15605	10250TM42	9905-01-175-7158	2	12
27193	10250T20KB	5930-01-176-9001	2	11
27192	11-2280		2	26
72971	11-50		2	4
			3	1
			4	8
72971	12-50B		2	5
			4	9
14652	125T	4820-01-178-2936	12	6
24617	144040		12	5
24617	144041		11	20
16004	144054		11	22
24617	144056		11	8
			11	17
24617	144129		11	10
62106	100.0.601	4310-01-179-6178	10	

NATIONAL STOCK NUMBER AND PART NUMBER INDEX

FSCM	PART NUMBER	PART NUMBER INDEX STOCK NUMBER	FIG.	ITEM
72971	201	5310-00-125-9924	3	2
27192	23-5528		2	28
27192	23-5529		2	27
24617	274825	5305-01-056-1501	1	1
			1	7
			2	2
			4	2
			11	12
			2	2
16004	29084		2	8
			2	9
02929	32F648		2	31
79470	3325X4	4730-00-277-8289	12	3
05472	37CB3000		3	12
05472	37CB4500		3	9
05472	37EP3200A01		3	16
05472	37EP3201A01	6105-01-175-9981	3	20
05472	37FN4001A02		3	25
05472	37GS1000		3	13
05472	37GS1001		3	10
05472	37RAB001X054		3	23
05472	37SAB001X054		3	29
62983	471063	5310-01-117-2410	10	2
27192	48-1019	5945-00-001-5933	2	22
34494	48A22OPS11/4NPT	4820-01-179-5345	5	4
			11	1
27192	49-4114		2	20
16004	50959		4	7
16004	51092		11	6
27192	55-1954		2	29
27192	6-23-2	5945-00-165-0369	2	25
79470	60X12		11	4
04255	60X5		10	24
79470	60X8	4730-00-278-8767	11	4
94894	61J2-1506	4910-00-204-2644	12	1
79470	61X12	4730-00-240-1740	11	5
79470	61X5		10	25
16004	66794		11	27
16004	67093		1	16
16004	67730		11	2
79470	68X4BODY ONLY		11	15
16004	68749		2	32
			11	26
15605	69-2765	5360-01-177-7995	2	21
27192	69-4358		2	30
23826	69HAU1	5930-00-539-2108	4	10
16004	69719		1	15
23826	75HA69	5930-00-521-8471	4	
16004	80476	5305-01-177-9709	1	4
16004	80557-1		2	10
16004	80978		10	23
16004	84952		11	28

NATIONAL STOCK NUMBER AND PART NUMBER INDEX

FSCM	PART NUMBER	PART NUMBER INDEX STOCK NUMBER	FIG.	ITEM
16004	84955-1		2	35
16004	84957	3020-01-178-6662	1	5
05472	85XU0407A04		3	27
16004	85297-1		2	14
16004	85359	4310-01-175-0764	2	7
16004	85402		1	8
16004	85403	4720-01-179-5414	12	2
16004	85454		1	11
16004	85455		1	3
16004	85480		3	3
16004	85481		2	6
16004	85482	4710-01-178-6433	11	3
			11	3
16004	85484	4710-01-178-9969	4	4
			11	14
16004	85487		2	33
16004	85488		2	34
16004	85512	4310-01-179-2521	10	28
27192	9-1887-2	5950-00-409-2192	2	23
01276	900729-18	5340-00-482-6835	4	3
			11	13
16004	9416918	5310-01-012-8962	1	6
			2	1
			4	1
			11	11

TM 5-4310-375-24P

By Order of the Secretary of the Army:

JOHN H. WICKHAM, JR.
General, United States Army
Chief of Staff

Official:

DONALD J. DELANDRO
Brigadier General, United States Army
The Adjutant General

DISTRIBUTION:

To be distributed in accordance with DA Form 12-25A, Organizational, Direct Support and General Support Maintenance Requirements for Air Compressor.

✻ U.S. GOVERNMENT PRINTING OFFICE: 1985-564-126/10086



THEN... JOT DOWN THE DOPE ABOUT IT ON THIS FORM. CAREFULLY TEAR IT OUT, FOLD IT AND DROP IT IN THE MAIL!

SOMETHING WRONG WITH THIS PUBLICATION?

FROM: (PRINT YOUR UNIT'S COMPLETE ADDRESS)
PFC JOHN DOE
COA, 3d ENGINEER BN
FT. LEONARDWOOD, MD 63108
 DATE SENT

PUBLICATION NUMBER: **TM 5-4310-375-24P**
 PUBLICATION DATE: **21 Feb 85**
 PUBLICATION TITLE: **Compressor Unit, Reciprocating, 15 CFM 175 PSI**

BE EXACT. PIN-POINT WHERE IT IS				IN THIS SPACE TELL WHAT IS WRONG AND WHAT SHOULD BE DONE ABOUT IT:
PAGE NO	PARA-GRAPH	FIGURE NO	TABLE NO	
6	2-1 a			<i>In line 6 of paragraph 2-1a the manual states the engine has <u>6</u> Cylinders. The engine on my set only has <u>4</u> Cylinders. Change the manual to show <u>4</u> Cylinders.</i>
B1		4-3		<i>Callout 16 on figure 4-3 is pointing at a <u>bolt</u>. In key to figure 4-3, item 16 is called a <u>shim</u> - Please correct one or the other.</i>
125	line 20			<i>I ordered a gasket, item 19 on figure B-16 by NSN 2910-00-762-3001. I got a gasket but it doesn't fit. Supply says I got what I ordered, so the NSN is wrong. Please give me a <u>good</u> NSN</i>

PRINTED NAME, GRADE OR TITLE, AND TELEPHONE NUMBER
JOHN DOE, PFC (268) 317-7111

SIGN HERE *John Doe*
JOHN DOE

TEAR ALONG PERFORATED LINE

FILL IN YOUR
UNIT'S ADDRESS

FOLD BACK

DEPARTMENT OF THE ARMY

OFFICIAL BUSINESS
PENALTY FOR PRIVATE USE \$300

POSTAGE AND FEES PAID
DEPARTMENT OF THE ARMY
DOD 314



TEAR ALONG PERFORATED LINE

COMMANDER
U S ARMY TROOP SUPPORT COMMAND
ATTN: AMSTR-MPS
4300 GOODFELLOW BOULEVARD
ST. LOUIS, MO 63120-1798

RECOMMENDED CHANGES TO EQUIPMENT TECHNICAL PUBLICATIONS



THEN... JOT DOWN THE DOPE ABOUT IT ON THIS FORM. CAREFULLY TEAR IT OUT. FOLD IT AND DROP IT IN THE MAIL!

SOMETHING WRONG WITH THIS PUBLICATION?

FROM: (PRINT YOUR UNIT'S COMPLETE ADDRESS)

DATE SENT

PUBLICATION NUMBER

TM 5-4310-375-24P

PUBLICATION DATE

21 Feb 85

PUBLICATION TITLE

Compressor Unit, Reciprocating,
15 CFM, 175 PSI

BE EXACT. PIN-POINT WHERE IT IS

PAGE NO	PARA-GRAPH	FIGURE NO	TABLE NO

IN THIS SPACE TELL WHAT IS WRONG AND WHAT SHOULD BE DONE ABOUT IT:

TEAR ALONG PERFORATED LINE

PRINTED NAME, GRADE OR TITLE, AND TELEPHONE NUMBER

SIGN HERE:

DA FORM 2028-2
1 JUL 79

PREVIOUS EDITIONS ARE OBSOLETE.
DRSTS-M Overprint 2, 1 Nov 80.

P.S.--IF YOUR OUTFIT WANTS TO KNOW ABOUT YOUR RECOMMENDATION MAKE A CARBON COPY OF THIS AND GIVE IT TO YOUR HEADQUARTERS

FILL IN YOUR
UNIT'S ADDRESS

FOLD BACK

DEPARTMENT OF THE ARMY

OFFICIAL BUSINESS
PENALTY FOR PRIVATE USE \$300

POSTAGE AND FEES PAID
DEPARTMENT OF THE ARMY
DOD 314



TEAR ALONG PERFORATED LINE

COMMANDER
U S ARMY TROOP SUPPORT COMMAND
ATTN: AMSTR-MPS
4300 GOODFELLOW BOULEVARD
ST. LOUIS, MO 63120-1798

FILL IN YOUR
UNIT'S ADDRESS

FOLD BACK

DEPARTMENT OF THE ARMY

OFFICIAL BUSINESS
PENALTY FOR PRIVATE USE \$300

POSTAGE AND FEES PAID
DEPARTMENT OF THE ARMY
DOD 314



TEAR ALONG PERFORATED LINE

COMMANDER
U S ARMY TROOP SUPPORT COMMAND
ATTN: AMSTR-MPS
4300 GOODFELLOW BOULEVARD
ST. LOUIS, MO 63120-1798

RECOMMENDED CHANGES TO EQUIPMENT TECHNICAL PUBLICATIONS



THEN... JOT DOWN THE DOPE ABOUT IT ON THIS FORM. CAREFULLY TEAR IT OUT. FOLD IT AND DROP IT IN THE MAIL!

SOMETHING WRONG WITH THIS PUBLICATION?

FROM: (PRINT YOUR UNIT'S COMPLETE ADDRESS)

DATE SENT

PUBLICATION NUMBER

TM 5-4310-375-24P

PUBLICATION DATE

21 Feb 85

PUBLICATION TITLE

Compressor Unit, Reciprocating,
15 CFM, 175 PSI

BE EXACT . . . PIN-POINT WHERE IT IS

PAGE NO	PARA- GRAPH	FIGURE NO	TABLE NO

IN THIS SPACE TELL WHAT IS WRONG AND WHAT SHOULD BE DONE ABOUT IT:

TEAR ALONG PERFORATED LINE

PRINTED NAME, GRADE OR TITLE, AND TELEPHONE NUMBER

SIGN HERE

DA FORM 2028-2
1 JUL 79

PREVIOUS EDITIONS
ARE OBSOLETE.
DRSTS-M Overprint 2, 1 Nov 80.

P.S.--IF YOUR OUTFIT WANTS TO KNOW ABOUT YOUR
RECOMMENDATION MAKE A CARBON COPY OF THIS
AND GIVE IT TO YOUR HEADQUARTERS

FILL IN YOUR
UNIT'S ADDRESS



FOLD BACK

DEPARTMENT OF THE ARMY

OFFICIAL BUSINESS
PENALTY FOR PRIVATE USE \$300

POSTAGE AND FEES PAID
DEPARTMENT OF THE ARMY
DOD 314



TEAR ALONG PERFORATED LINE

COMMANDER
U S ARMY TROOP SUPPORT COMMAND
ATTN: AMSTR-MPS
4300 GOODFELLOW BOULEVARD
ST. LOUIS, MO 63120-1798

The Metric System and Equivalents

Linear Measure

1 centimeter = 10 millimeters = .39 inch
 1 decimeter = 10 centimeters = 3.94 inches
 1 meter = 10 decimeters = 39.37 inches
 1 dekameter = 10 meters = 32.8 feet
 1 hectometer = 10 dekameters = 328.08 feet
 1 kilometer = 10 hectometers = 3,280.8 feet

Weights

1 centigram = 10 milligrams = .15 grain
 1 decigram = 10 centigrams = 1.54 grains
 1 gram = 10 decigram = .035 ounce
 1 dekagram = 10 grams = .35 ounce
 1 hectogram = 10 dekagrams = 3.52 ounces
 1 kilogram = 10 hectograms = 2.2 pounds
 1 quintal = 100 kilograms = 220.46 pounds
 1 metric ton = 10 quintals = 1.1 short tons

Liquid Measure

1 centiliter = 10 milliliters = .34 fl. ounce
 1 deciliter = 10 centiliters = 3.38 fl. ounces
 1 liter = 10 deciliters = 33.81 fl. ounces
 1 dekaliter = 10 liters = 2.64 gallons
 1 hectoliter = 10 dekaliters = 26.42 gallons
 1 kiloliter = 10 hectoliters = 264.18 gallons

Square Measure

1 sq. centimeter = 100 sq. millimeters = .155 sq. inch
 1 sq. decimeter = 100 sq. centimeters = 15.5 sq. inches
 1 sq. meter (centare) = 100 sq. decimeters = 10.76 sq. feet
 1 sq. dekameter (are) = 100 sq. meters = 1,076.4 sq. feet
 1 sq. hectometer (hectare) = 100 sq. dekameters = 2.47 acres
 1 sq. kilometer = 100 sq. hectometers = .386 sq. mile

Cubic Measure

1 cu. centimeter = 1000 cu. millimeters = .06 cu. inch
 1 cu. decimeter = 1000 cu. centimeters = 61.02 cu. inches
 1 cu. meter = 1000 cu. decimeters = 35.31 cu. feet

Approximate Conversion Factors

To change	To	Multiply by	To change	To	Multiply by
inches	centimeters	2.540	ounce-inches	newton-meters	.007062
feet	meters	.305	centimeters	inches	.394
yards	meters	.914	meters	feet	3.280
miles	kilometers	1.609	meters	yards	1.094
square inches	square centimeters	6.451	kilometers	miles	.621
square feet	square meters	.093	square centimeters	square inches	.155
square yards	square meters	.836	square meters	square feet	10.764
square miles	square kilometers	2.590	square meters	square yards	1.196
acres	square hectometers	.405	square kilometers	square miles	.386
cubic feet	cubic meters	.028	square hectometers	acres	2.471
cubic yards	cubic meters	.765	cubic meters	cubic feet	35.315
fluid ounces	milliliters	29.573	cubic meters	cubic yards	1.308
pints	liters	.473	milliliters	fluid ounces	.034
quarts	liters	.946	liters	pints	2.113
gallons	liters	3.785	liters	quarts	1.057
ounces	grams	28.349	liters	gallons	.264
pounds	kilograms	.454	grams	ounces	.035
short tons	metric tons	.907	kilograms	pounds	2.205
pound-feet	newton-meters	1.356	metric tons	short tons	1.102
pound-inches	newton-meters	.11296			

Temperature (Exact)

°F Fahrenheit temperature 5/9 (after subtracting 32) Celsius temperature °C

057263